

Glimpses of the Past

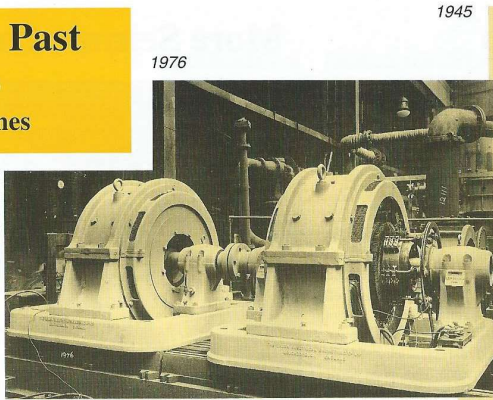
by George Toms

No. 23 Bygone Scenes

Now and again old Brush views emerge from the many thousands of official photographs taken over the years. It is not always possible to compile one theme from them for Glimpses of the Past, but to overlook them is to deny many people a chance to see them. In this issue we look at some of them – a varied selection of old photographs which have appeared from diverse sources in recent times. They are described in chronological order.

Photograph No.1945 was taken in 1913 and depicts a motor generator set specially painted in matt grey for the works photographer. Whilst little is known about the set, it was probably photographed for inclusion in a catalogue. Of note is the casting of the Company's title into the endframes.

Photograph No.1976 was taken in what is now 38 Shop between Main Test and the despatch area, at the railway end of the shop circa 1913. It depicts a motor generator set with the D.C. machine prominent on the right. Again, not much is known about the set, but specially prepared in matt grey it stands out well against the background of the test area of the day. The pipework is part of the steam system fed from the boiler house (lurking in the background gloom) and which supplied the original turbine test area.

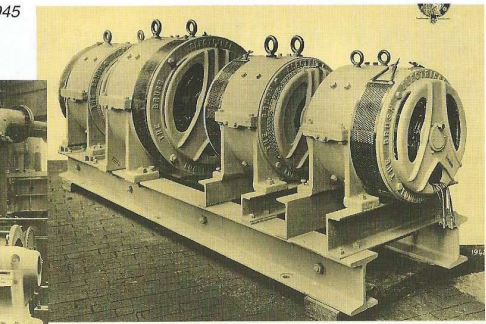


1945

1976

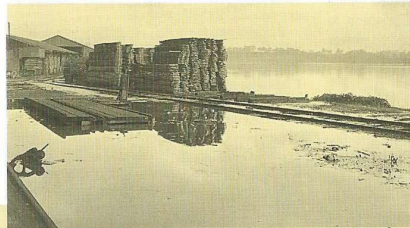
Photograph No.2065 also dates from circa 1913 and probably depicts the forerunner of the 'S' type alternator (complete with exciter). Note the Brush Britannia and garter device included on the original print.

For these photographs I am indebted to Mick Pascall of 24 Shop nightshift.

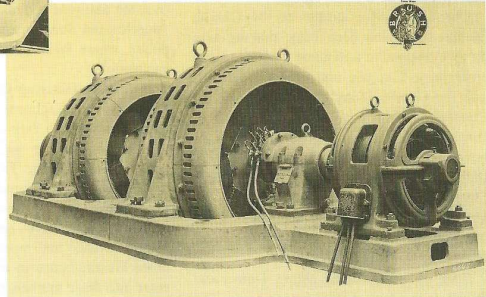


2065

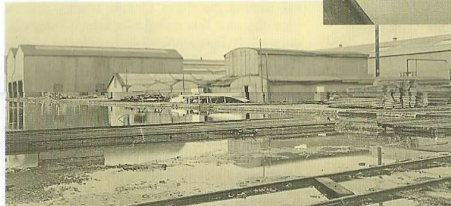
5797



5796



5798



5799



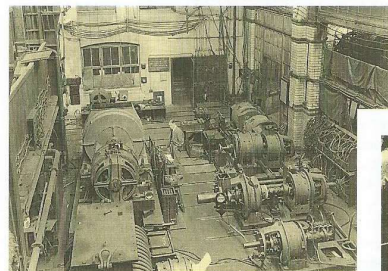
5800

In May 1932 heavy rain resulted in large areas of the Soar Valley being flooded, an unusual occurrence at that time of the year. More unusual was the extensive flooding in Loughborough town centre as the Woodbrook burst its banks and deluged large areas of shops and houses. Before it passed into the river it flooded the Midland Station and entered the Falcon Works.

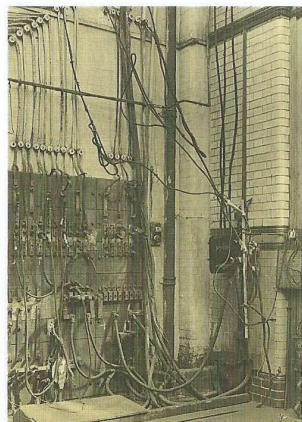
For twenty-four hours during the weekend of 21/22 May there was continuous heavy rain and many people awoke on the Sunday morning to find that their houses were flooded. On the Monday morning Brush employees arrived at work to find several shops flooded and found it impossible to start work.

The accompanying views have kindly been provided by Mr. Len Staines, and these show some of the flooding at the Falcon Works. First (No. 5796) we see the scene at the rear of the works looking across the tramcar traverser pit towards what is now Hawker Siddeley Switchgear. The traverser rails are just visible above the water as are the bypass lines in the foreground. The next view (No.5797) is taken from the traverser itself and shows the view across the Meadows, the new wood shed and stocks of timber. Then comes the scene of desolation (No.5798) as water pours into the traverser pit during the heavy rain. The buildings on the right are the tramcar shops, now the Coil Shop and Central Machine Shop.

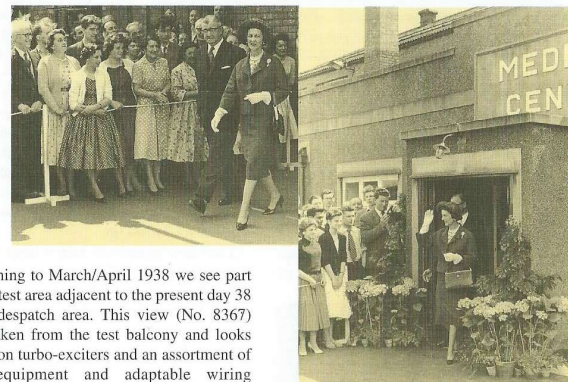
As water continues to pour in we see the opposite view in illustration No.5799 and a view (No.5800) alongside the railway. The building in the foreground later became the Coil Shop and behind we see the then Two-storey office block, with the roof peak of the Foundry beyond.



8367



8366



Turning to March/April 1938 we see part of the test area adjacent to the present day 38 Shop despatch area. This view (No. 8367) was taken from the test balcony and looks down on turbo-excitors and an assortment of test equipment and adaptable wiring arrangements. The wall in the centre background has long-since gone, whereas the entrance to the old power house on the right still remains. The draught exclusion sheets have also gone! Photograph No.8366 homes in one some of the adaptable test circuitry.

Today this area is still part of the test department and houses some of the motor generator sets which provide power for test purposes.

Finally, we come to 2nd June 1959 and the visit of the Duchess of Kent to the Falcon Works. The views show her being escorted around the works and plenty of employees who flocked to see her. I doubt if the display of pot plants next to the Medical Centre doorway won any awards! Her visit was extensive and included driving a brand new Type 2 locomotive, lucky lady!